

Table of Contents

Database 2

Position..... 2

 Master 2

 Skills 4

 Evaluation Factors 5

 Required Courses 6

 Budgeted Positions 7

 National Occupation Classification 8

info:HR Data Dictionary - Position Menu

Database

The database used to capture all info:HR data is called "infohr". The tables and fields are defined below each screen shot.

Position Master

Data Elements

Field	Data Base Field Name
Position	hrjob-->jb_code
Description	hrjob-->jb_descr
Alternate	j hrjob-->b_descr2
Status	hrjob-->jb_status
Group	hrjob-->jb_grpcd
Salary Grid	hrjob-->jb_salcd
Mid-Point	hrjob-->jb_midpoint
Reports To 1	hrjob-->jb_reptau
Reports To 2	hrjob-->jb_reptau2
Reports To 3	hrjob-->jb_reptau3
Union	hrjob-->jb_org
N.O.C. Code	hrjob-->jb_fedgrp
Number of Positions	hrjob-->jb_nbrpos

info:HR Data Dictionary - Position Menu

Field	Data Base Field Name
Positions Filled	hrjob-->jb_nbrfil
FTE #	hrjob-->jb_ftenum
Total FTE #	hrjob-->jb_ftotnu
FTE Hours/Year	hrjob-->jb_ftehrs
Total FTE Hours/Year	hrjob-->jb_ftetohr
Total Points	hrjob-->jb_points
Grid Steps 1 through 20	hrjob-->jb_s1 through jb_s20

info:HR Data Dictionary - Position Menu

Skills

info:HR - [Position Skills - APCL]

File New Employee Edit Move Find Import/Export Applicant Tracking Windows

info:HR

- Employee
 - Position
 - Find Position
 - Master
 - Skills
 - Eval Factors
 - Required Courses
 - Budgeted Positions
 - National Occupation Classification
 - Position Duties
 - Position Requirements
 - Application Process
 - Reports
 - Mass Updates
 - Setup
 - Import/Export
 - Payweb
 - HRSof

Position APCL ACCOUNTS PAYABLE CLERK

Skill	Experience	Comments	Skill Required?

Skill

Experience Factor

Comments

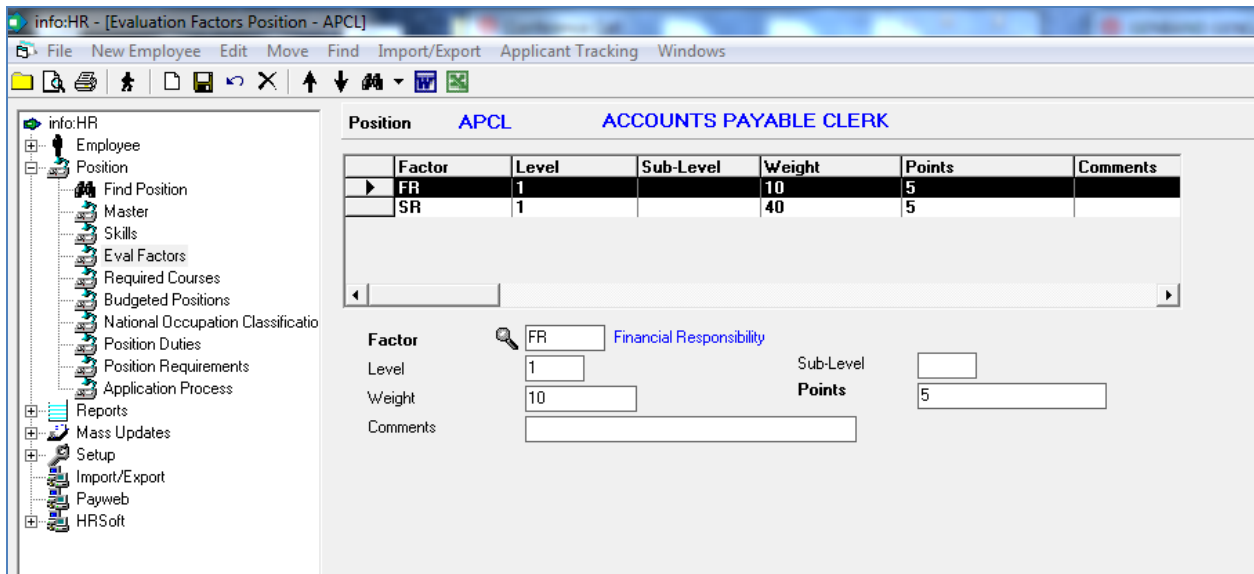
Skill Required

Position Skill

Data Elements

Field	Data Base Field Name
Position	hrjobskl-->js_code
Skill	hrjobskl-->js_skill
Experience Factor	hrjobskl-->js_expf
Comments	hrjobskl-->js_comment
Skill Required	hrjobskl-->js_issklreq

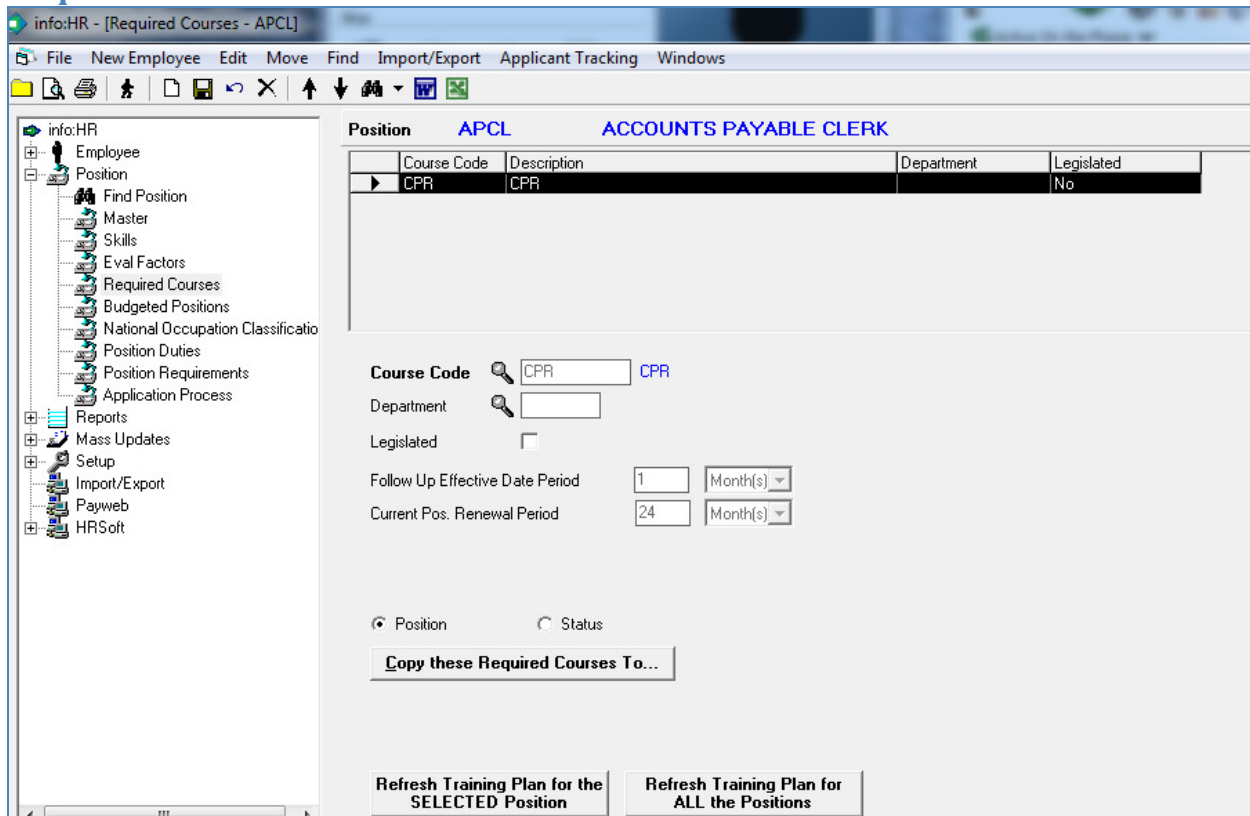
Evaluation Factors



Data Elements

Field	Data Base Field Name
Position	hrjobevl-->je_code
Factor	hrjobevl-->je_factor
Level	hrjobevl-->je_level
Sub-Level	hrjobevl-->je_sublvl
Weight	hrjobevl-->je_wgt
Points	hrjobevl-->je_points
Comments	hrjobevl-->je_comments

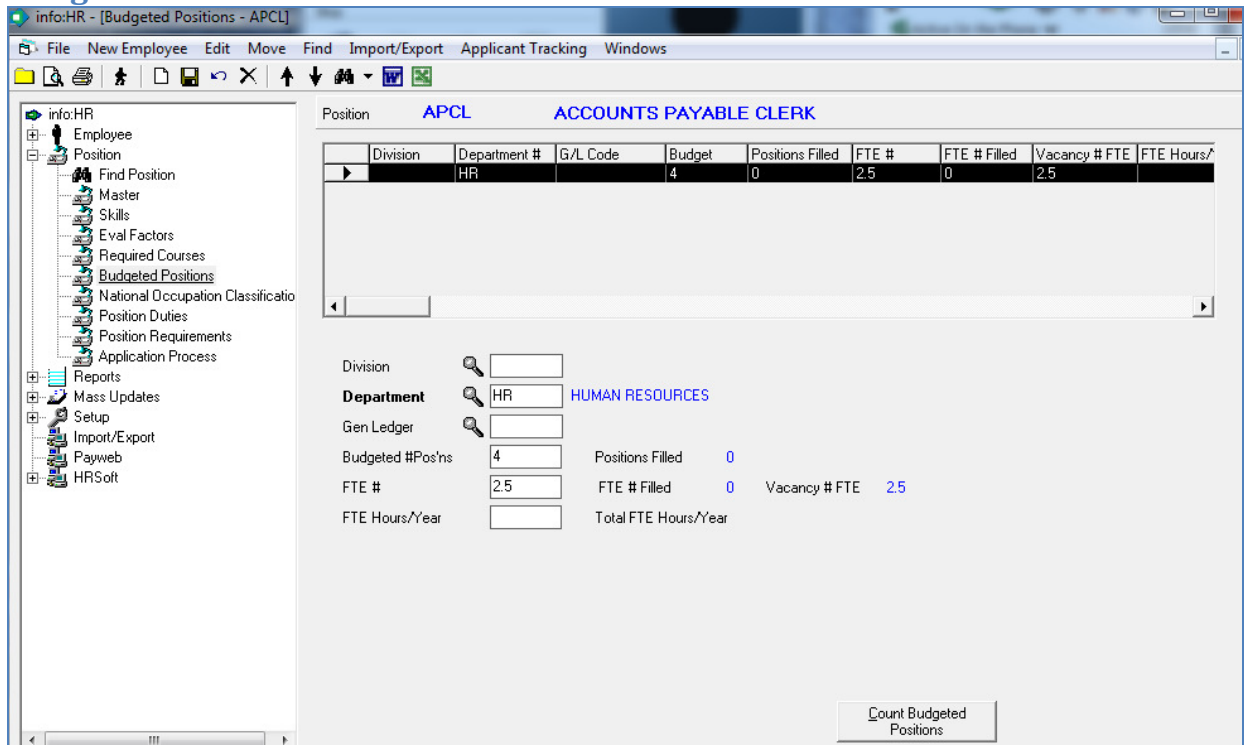
Required Courses



Data Elements

Field	Data Base Field Name
Position	hr_job_couse-->pc_job
Course Code	hr_job_couse-->pc_crscode
Department	hr_job_couse-->pc_deptno
Legislated	hr_job_couse-->pc_legislated
Follow Up Effective Date Period	hr_job_couse-->pc_renew_followup
Follow Up Effective Date Period Time	hr_job_couse-->pc_flwup_prd_dwmy
Current Pos. Renewal Period	hr_job_couse-->pc_renew_crs_cur
Current Pos. Renewal Period Time	hr_job_couse-->pc_cur_prd_dwmy

Budgeted Positions



Data Elements

Field	Data Base Field Name
Position Code	hrjobbud-->jg_code
Division	hrjobbud-->jg_div
Department	hrjobbud-->jg_deptno
Gen Ledger	hrjobbud-->jg_glno
Budgeted # Pos'ns	hrjobbud-->jg_budgnbr
Positons Filled	hrjobbud-->jg_nbrfil
FTE #	hrjobbud-->jg_ftenum
FTE # Filled	hrjobbud-->jg_ftenumfil
Vacancy # FTE	hrjobbud-->jg_ftenumvacn
FTE Hours/Year	hrjobbud-->jg_ftehrs
Total FTE Hours/Year	hrjobbud-->jg_ftetothr

National Occupation Classification

Group	Short Description	Description
0001	SEN MGR	SENIOR MANAGERS
0002	MID MGR	MIDDLE AND OTHER MANAGERS
0003	PROF	PROFESSIONALS
0004	SEMI	SEMI-PROFESSIONAL/TECHNICIAN
0005	SUPR	SUPERVISORS
0006	FOREMEN	FOREMEN/WOMEN
0007	ADMIN	ADMINISTRATIVE/SENIOR CLERIC/
0008	SLSVC3	SALES AND SERVICE - SKILL LEVEL
0009	SKILLED	SKILLED CRAFTS AND TRADES

Group: Abbreviated Description:

SENIOR MANAGERS

Data Elements

Field	Data Base Field Name
Group	hr_occupation_class-->oc_code
Abbreviated Description	hr_occupation_class-->oc_sdescr
Long Description	hr_occupation_class-->oc_descr