

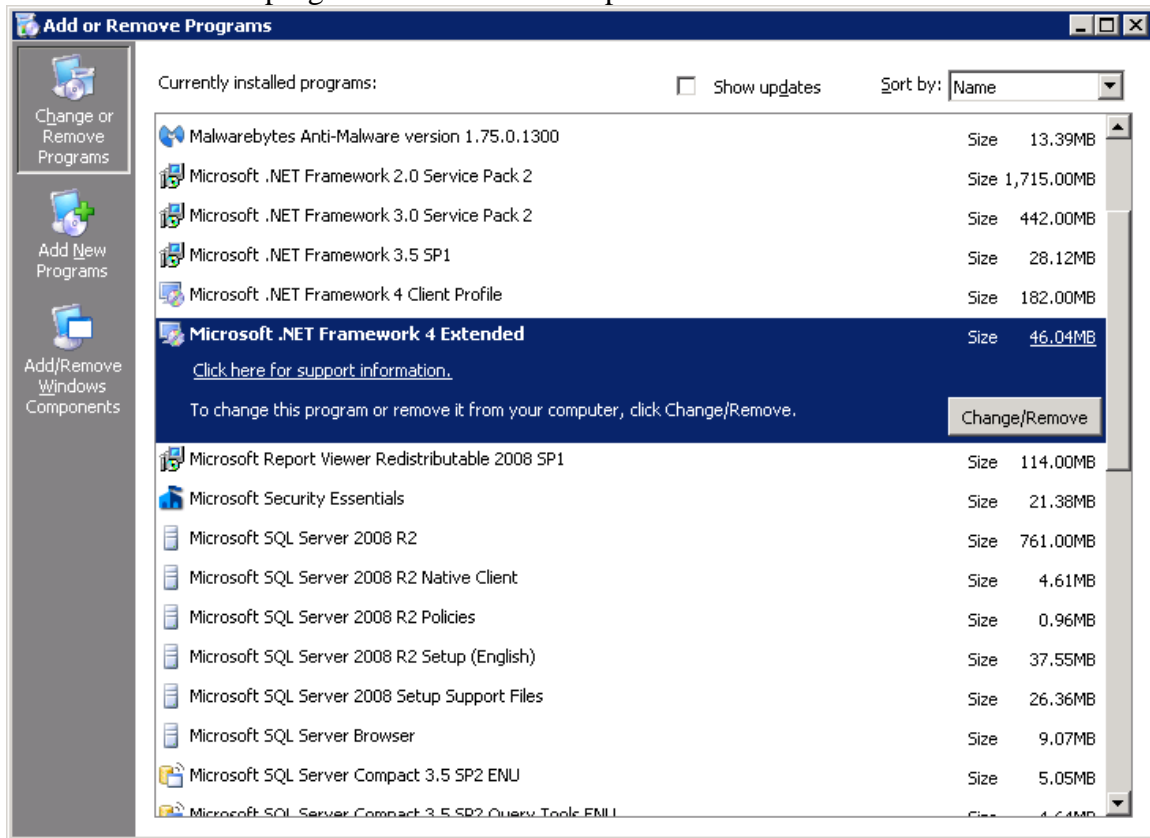
ESS/Timesheet Environment Check before Install

Current version of ESS/Timesheets runs on Microsoft .Net 4.0 or 4.5

Windows 2003 Server and IIS 6

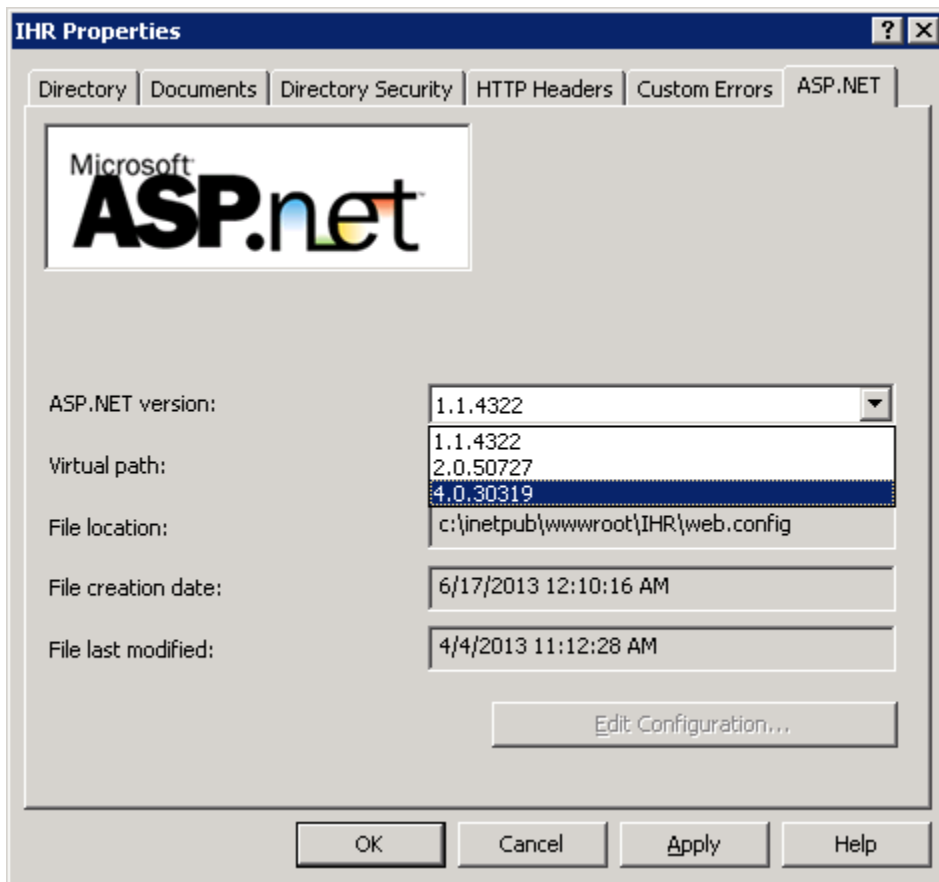
To check if this environment is installed correctly on Windows 2003 please check the folder C:\WINDOWS\Microsoft.NET\Framework\v4.0.30319 Or in the framework 64

Also in add remove programs it should show up.

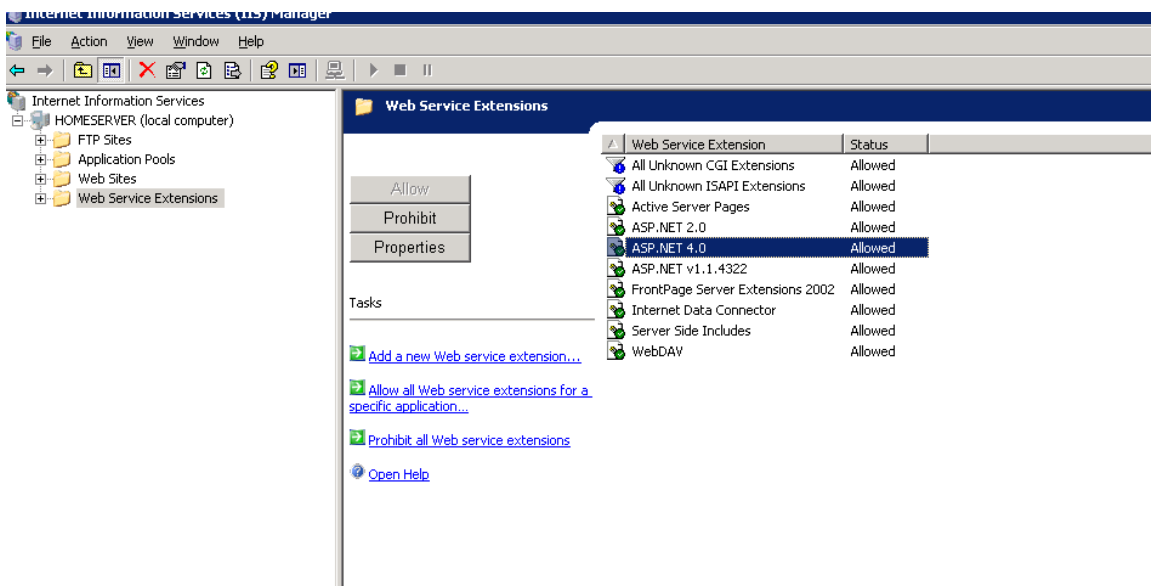


Please right click on the default website. And locate asp.net tab. If you don't see an asp.net tab then you have a buggy install of .Net framework.

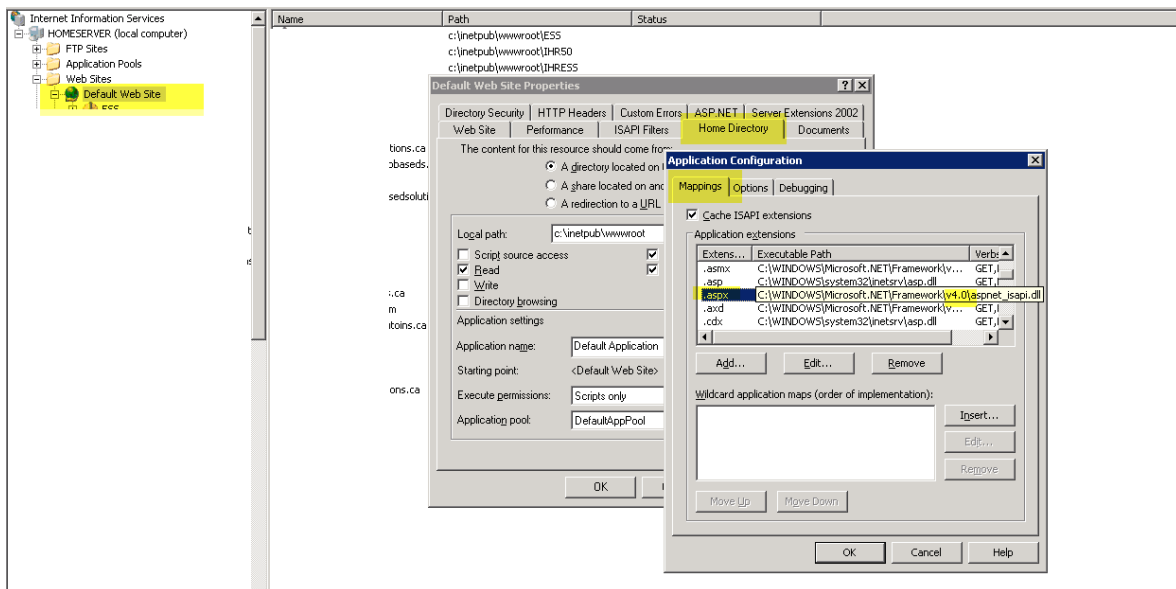
If you see an asp.net tab, please check if the runtime 4.0.* is available. If so you are ready to start the installation.



Please make sure the runtime is allowed to run at the server level.



Please check to see if the .Net handlers are registered with default website.
 Right click on default website > Properties > Home directory tab > Mapping Tab > Find .aspx handler for v4.0.



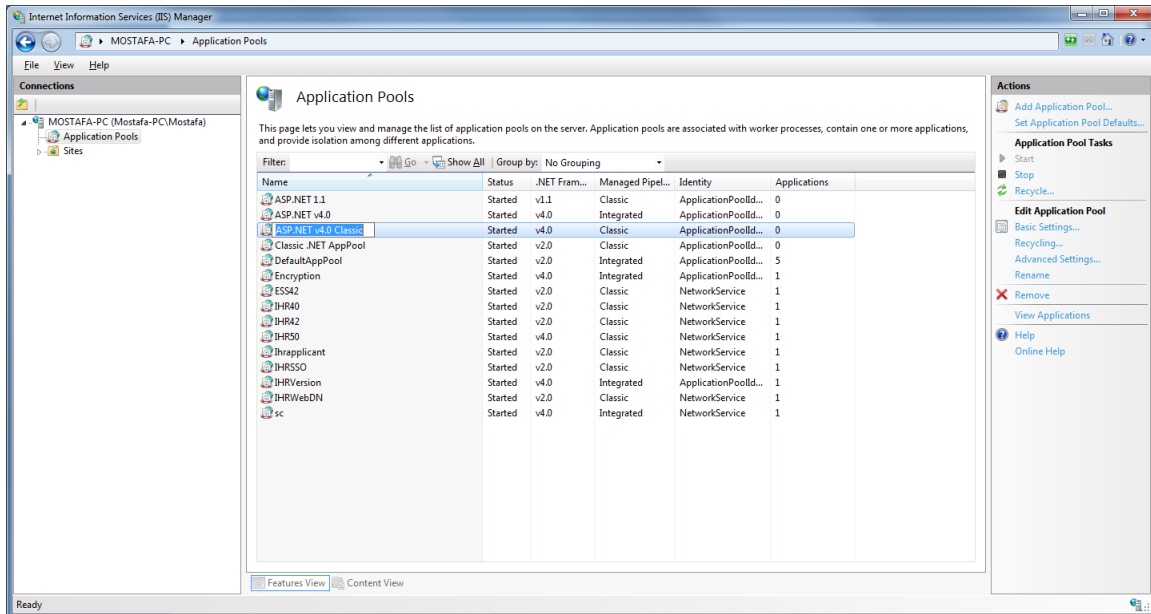
Windows 2008/2012 Server

Please make sure that 4.0 folder is in the Microsoft.Net folder

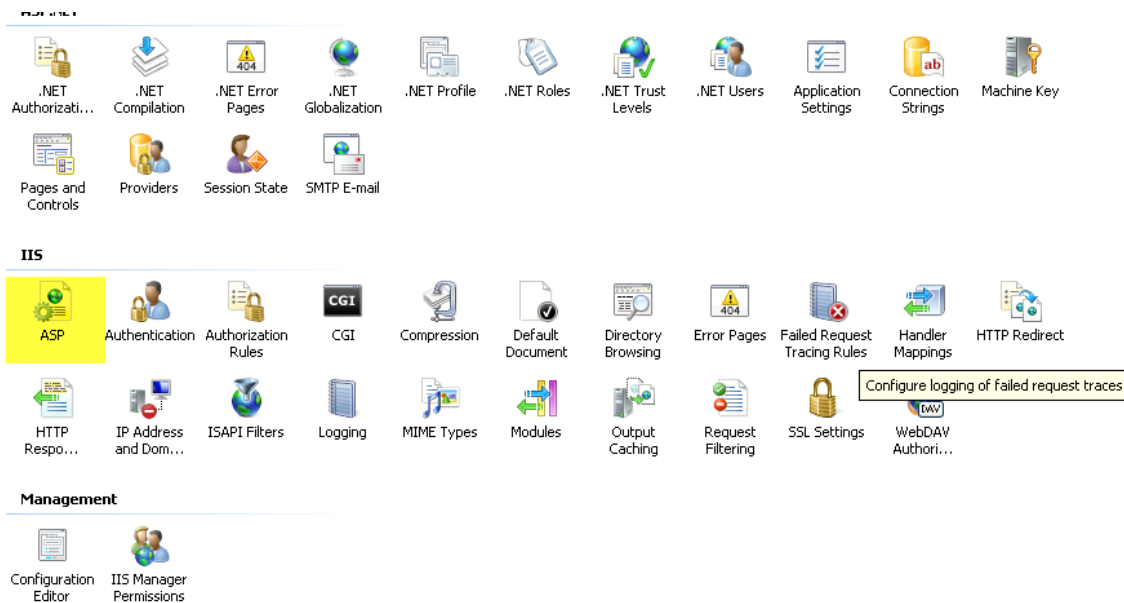
C:\Windows\Microsoft.NET\Framework\v4.0.30319 or

C:\Windows\Microsoft.NET\Framework64\v4.0.30319

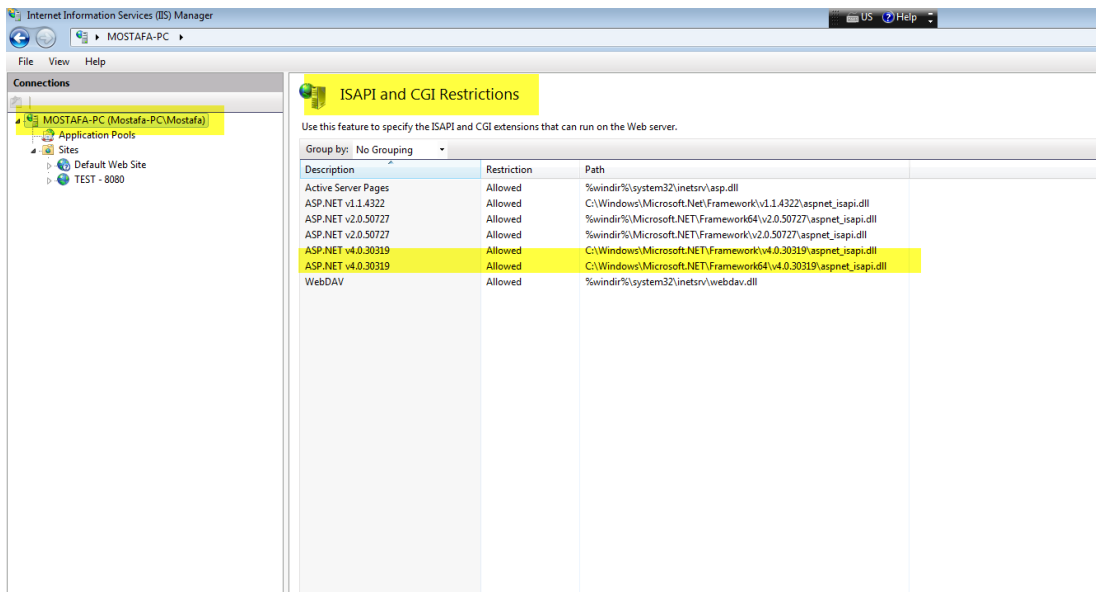
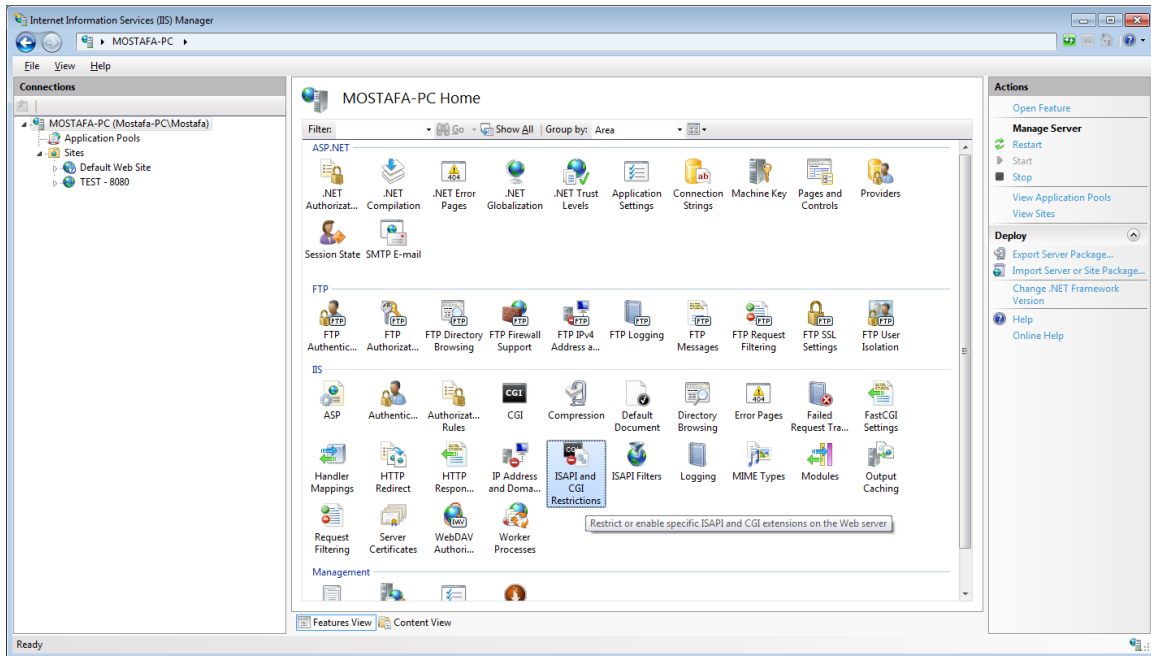
Open IIS manager and select "Application Pools" and see if "ASP.NET v4.0 Classic" with v4.0 is there.



Please make sure "ASP" is installed and showing up as an option in IIS manager when you click on "Default Website".



Please ensure that ASP.NET 4.0 is allowed at the server level.



Please make sure that ASP.NET handlers are registered with IIS. Go to default website > click> in the middle area click handler mappings

Internet Information Services (IIS) Manager

Connections

- Application Pools
 - Default Web Site
 - 02
 - 09
 - aspnet_client
 - EA
 - EADNWeb
 - EducationAdmin
 - Encrypt
 - ESS
 - ESS42
 - Hermu
 - HRSS.Encryption
 - IHR40
 - IHR40 - Copy
 - IHR41
 - IHR42
 - IHR42 - Copy
 - IHR50
 - IHRApplicant
 - IHRAttEntry
 - IHRSSO
 - IHRTimeSheetAlertService
 - IHRVersion
 - IHRWeb
 - IHRWebDN
 - IHRWebDNTst
 - m
 - os
 - sc
 - telarik
 - test
 - testinstall
 - TS

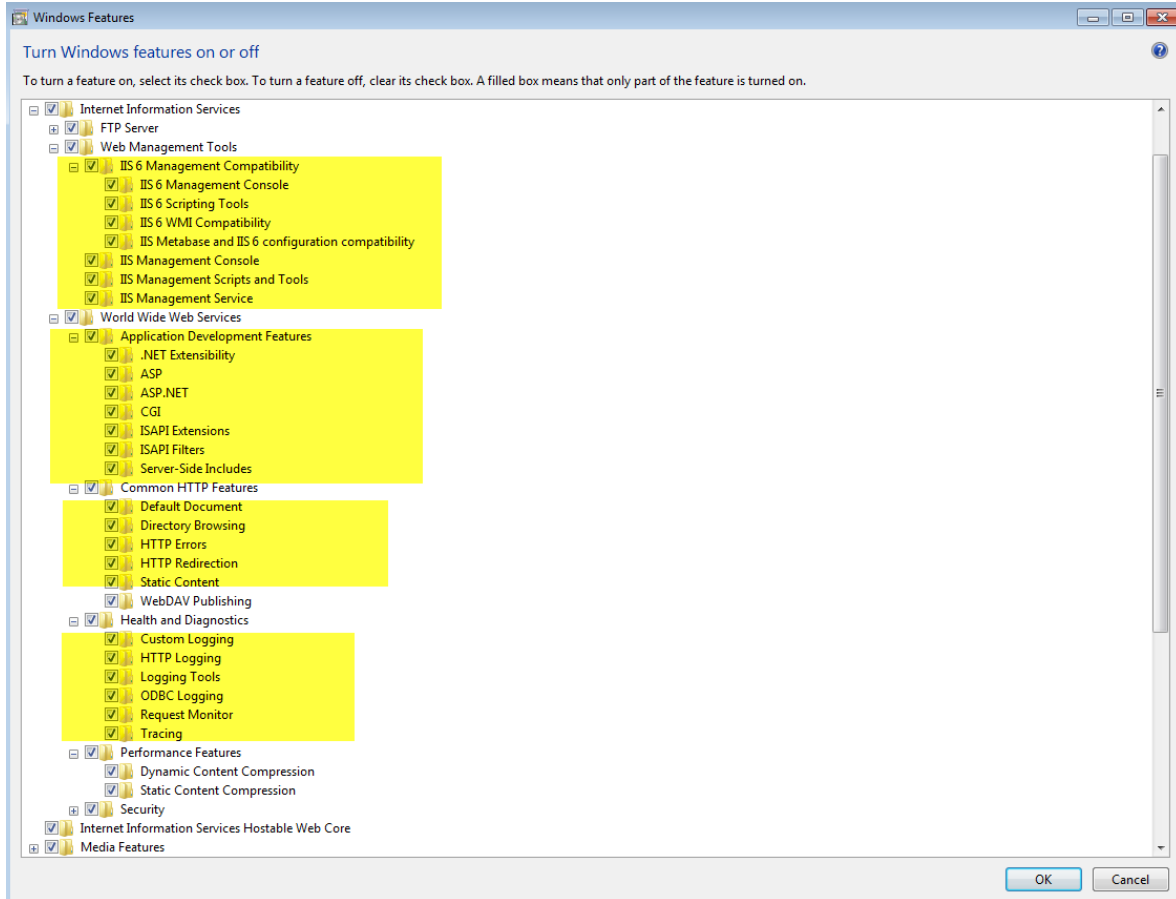
Handler Mappings

Use this feature to specify the resources, such as DLLs and managed code, that handle responses for specific request types.

Group by: State

Name	Path	State	Path Type	Handler	Entry Type
OptionsVerbHandler	*	Enabled	Unspecified	ProtocolSupportModule	Inherited
ExtensionlessUrlHandler-ISAPI-4.0_32bit	*	Enabled	Unspecified	IsapiModule	Inherited
ExtensionlessUrlHandler-ISAPI-4.0_64bit	*	Enabled	Unspecified	IsapiModule	Inherited
ExtensionlessUrlHandler-Integrated-4.0	*	Enabled	Unspecified	System.Web.Handlers.Transfer...	Inherited
SimpleHandlerFactory-ISAPI-4.0_32bit	*.ashx	Enabled	Unspecified	IsapiModule	Inherited
SimpleHandlerFactory-ISAPI-4.0_64bit	*.ashx	Enabled	Unspecified	IsapiModule	Inherited
SimpleHandlerFactory-Integrated-4.0	*.ashx	Enabled	Unspecified	System.Web.UI.SimpleHandle...	Inherited
SimpleHandlerFactory-Integrated	*.ashx	Enabled	Unspecified	System.Web.UI.SimpleHandle...	Inherited
SimpleHandlerFactory-ISAPI-2.0	*.ashx	Enabled	Unspecified	IsapiModule	Inherited
SimpleHandlerFactory-ISAPI-2.0-64	*.ashx	Enabled	Unspecified	IsapiModule	Inherited
WebServiceHandlerFactory-ISAPI-4.0_32bit	*.asmx	Enabled	Unspecified	IsapiModule	Inherited
WebServiceHandlerFactory-ISAPI-4.0_64bit	*.asmx	Enabled	Unspecified	IsapiModule	Inherited
WebServiceHandlerFactory-Integrated-4.0	*.asmx	Enabled	Unspecified	System.Web.Script.Services.S...	Inherited
WebServiceHandlerFactory-Integrated	*.asmx	Enabled	Unspecified	System.Web.Services.Protoco...	Inherited
WebServiceHandlerFactory-ISAPI-2.0	*.asmx	Enabled	Unspecified	IsapiModule	Inherited
WebServiceHandlerFactory-ISAPI-2.0-64	*.asmx	Enabled	Unspecified	IsapiModule	Inherited
ASPCClassic	*.asp	Enabled	File	IsapiModule	Inherited
aspq-ISAPI-4.0_32bit	*.aspq	Enabled	Unspecified	IsapiModule	Inherited
aspq-ISAPI-4.0_64bit	*.aspq	Enabled	Unspecified	IsapiModule	Inherited
aspq-Integrated-4.0	*.aspq	Enabled	Unspecified	System.Web.HttpForbiddenH...	Inherited
PageHandlerFactory-ISAPI-4.0_32bit	*.aspx	Enabled	Unspecified	IsapiModule	Inherited
PageHandlerFactory-ISAPI-4.0_64bit	*.aspx	Enabled	Unspecified	IsapiModule	Inherited
PageHandlerFactory-Integrated-4.0	*.aspx	Enabled	Unspecified	System.Web.UI.PageHandlerF...	Inherited
PageHandlerFactory-Integrated	*.aspx	Enabled	Unspecified	System.Web.UI.PageHandlerF...	Inherited
PageHandlerFactory-ISAPI-2.0	*.aspx	Enabled	Unspecified	IsapiModule	Inherited
PageHandlerFactory-ISAPI-2.0-64	*.aspx	Enabled	Unspecified	IsapiModule	Inherited
AXD-ISAPI-4.0_32bit	*.axd	Enabled	Unspecified	IsapiModule	Inherited
AXD-ISAPI-4.0_64bit	*.axd	Enabled	Unspecified	IsapiModule	Inherited
AXD-ISAPI-2.0	*.axd	Enabled	Unspecified	IsapiModule	Inherited
AXD-ISAPI-2.0-64	*.axd	Enabled	Unspecified	IsapiModule	Inherited
SecurityCertificate	*.cer	Enabled	File	IsapiModule	Inherited
cshmt-ISAPI-4.0_32bit	*.cshmt	Enabled	Unspecified	IsapiModule	Inherited
cshmt-ISAPI-4.0_64bit	*.cshmt	Enabled	Unspecified	IsapiModule	Inherited
cshmt-Integrated-4.0	*.cshmt	Enabled	Unspecified	System.Web.HttpForbiddenH...	Inherited
cshmt-ISAPI-4.0_32bit	*.cshmt	Enabled	Unspecified	IsapiModule	Inherited
cshmt-ISAPI-4.0_64bit	*.cshmt	Enabled	Unspecified	IsapiModule	Inherited
cshmt-Integrated-4.0	*.cshmt	Enabled	Unspecified	System.Web.HttpForbiddenH...	Inherited
HttpRemotingHandlerFactory-rem-ISAPI-4.0_32bit	*.rem	Enabled	Unspecified	IsapiModule	Inherited

Please ensure that IIS 7/8 has all the following components installed.



- Only the highlighted items are required.